

Famous Migration for Custom Routines

[PRINT THIS PAGE](#)

Famous Migration for Custom Routines is a program that addresses most issues that might be encountered for custom routines when updating Famous. This program, called Migrate.exe, is located in the Famous60\Update directory on the Famous server.

The document [Database Changes Between Releases](#) may be a helpful reference for you as you prepare for an upgrade. This document shows the differences between a given release and its immediately preceding release.

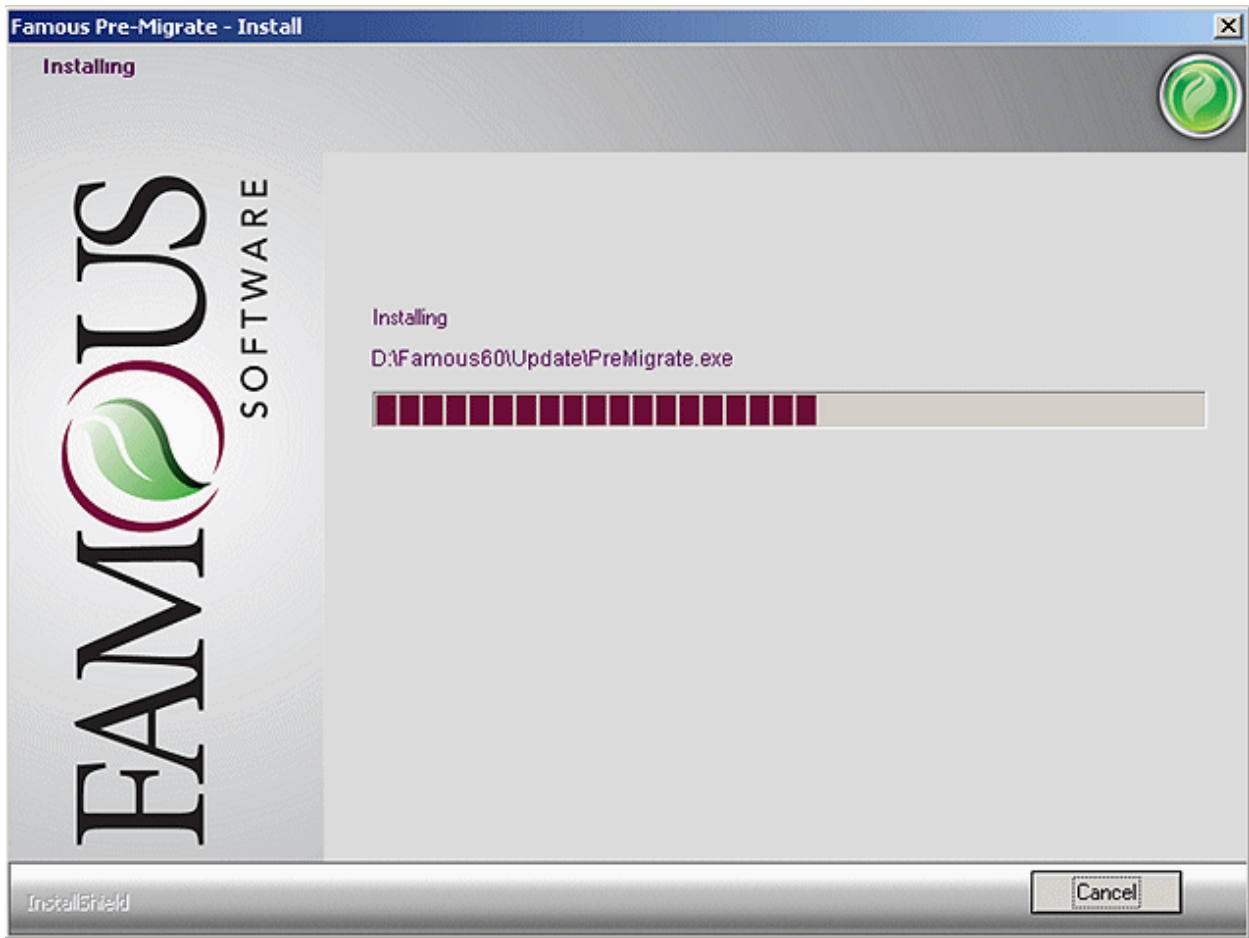
Prior to Migrating Custom Routines

Famous customers who use custom formats are encouraged to run the Pre-migrate Tool and view the report it generates prior to applying the upgrade. The Pre-migrate Tool, available for download from the Famous Web site, is a convenient tool that you can run to foresee issues that could arise during the migration of custom routines. This tool scans all custom formats, looking for potential issues that database changes might cause. The report that is generated when you run the Pre-migrate Tool provides a list of flagged formats, the reason the format is flagged, and the recommended mitigating action.

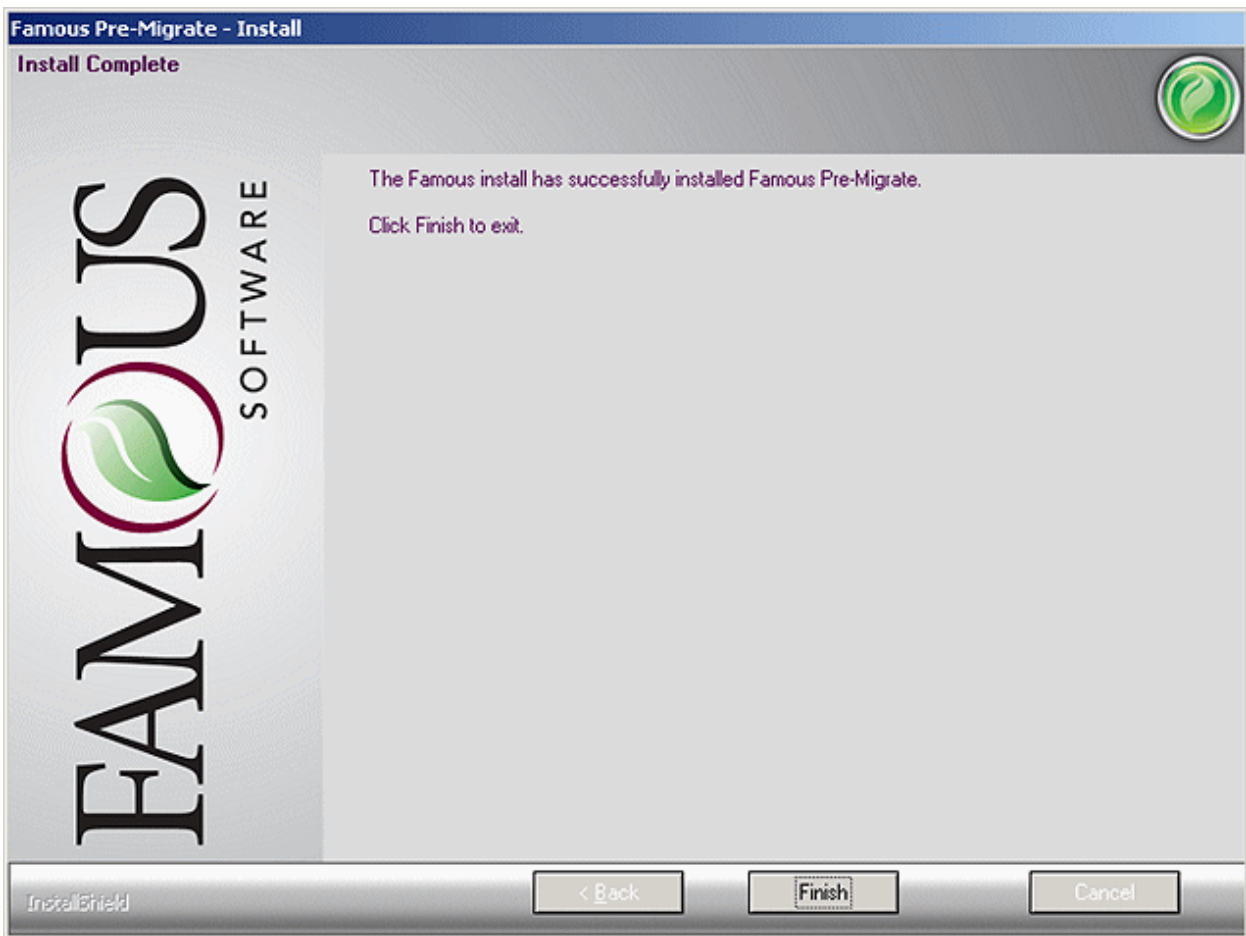
To run the Pre-migrate Tool:

1. From any workstation that is running Famous, download the [Pre-migrate Tool](#) from the link available on the Famous Web site (FamousSoftware.com).
2. Launch the installation executable for the Pre-migrate Tool by double-clicking the premigrate.exe file.

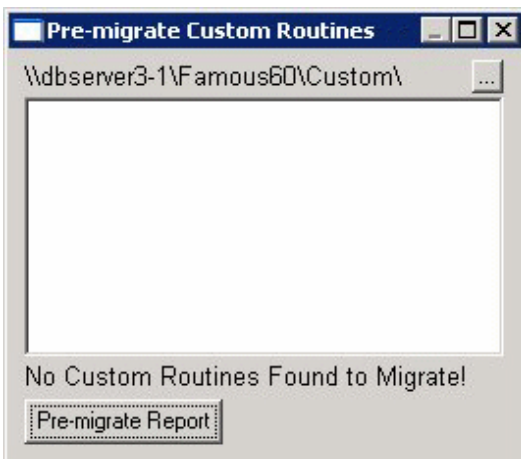
The installation program automatically puts itself into the Famous60\Update folder on the Famous server.



3. When the installation program is done, click Finish.



4. Go to the Famous60\Update folder and double-click the premigrate.exe file to run the Pre-migrate Tool.
5. The tool scans all custom formats, and then indicates when it is done.



6. Click the Pre-migrate Report button to generate the report.
7. The resulting report shows flagged formats, the reason the format is flagged, and recommended action.

Migrating Custom Routines After Updating

From a workstation running the updated Famous V6.2 client, run the migration program after your successful Famous V6.2 conversion. (*NOTE: As of Famous Release 112.00, when you run the Famous Client Install from your server, the Famous Migration for Custom Routines program launches automatically when the Famous Client Install is finished.*) If you run the migration program on a workstation that does *not* have the Famous V6.2 client, an error message displays indicating that the program is unable to locate the required DLL. When the migrate program runs successfully, files are migrated into the Famous60\Custom directory with an extension of PBL.

To migrate custom routines after updating Famous:

1. If it was not already launched from a client update, start the Famous Migration for Custom Routines by finding the Famous60\Update directory on the Famous server and opening the file named Migrate.exe.

A dialog box opens, containing a list of PBL files in the Famous60\Custom directory.

2. Click Migrate to begin the process. It loops through the files and displays the name of the report it is migrating on the bottom left-hand side of the window.
3. Upon completion, you see "Migration Complete!"
4. Click Find PBL to migrate another file or just close the dialog box.

If you have other custom PBLs (e.g., UserRpts.pbl) that exist outside of the Custom directory, then you must do one of the following:

- Copy all the PBL files to the Famous60\Custom directory before running the migration program. After the migration, copy the files back into their original location (overwriting the older one).
- Run the migration program. After it completes, click Find PBL. This allows you to browse the network and select any PBL file. Click Migrate to begin the process.

The newly migrated PBLs can only be accessed from InfoMaker 9. You must install this version before any changes can be made to your custom reports. (InfoMaker 9 disks are included in the update package if you purchased them from Famous.)

*Famous Software LLC
3/06/09*

[Close Window](#)